



THE DANGERS OF EVOLUTION

part 2: "Problems With The Theory Of Evolution"

Does science prove mankind evolved from microbes to humans?

III. WHERE DID THE THEORY OF _____ COME FROM?

A. "Evolution" theory _____:

"The theory that groups of organisms change with passage of time, mainly as a result of natural selection, so that descendants differ morphologically and physiologically from their ancestors." — AMERICAN HERITAGE DICTIONARY

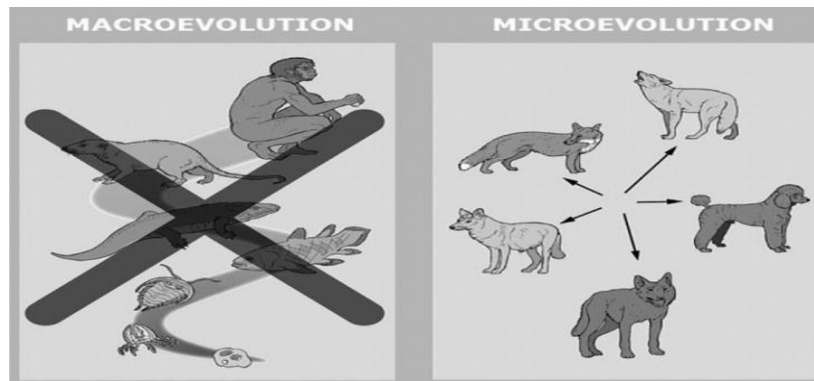
B. "Evolution" has several _____.

1. _____ - Origin of time, space & matter.
2. _____ - Origin of life.
3. _____ - Origin of major "kinds" or species.
4. _____ - Variations within the "kinds". (THIS definition is scientific)

NATURAL SELECTION: The process by which traits become more or less common in a population due to consistent effects upon the survival or reproduction of their bearers. It is a key mechanism of evolution.

Spe-cies 'spesez,-Shez/, *noun* 1. BIOLOGY: a group of living organisms consisting of similar individuals capable of exchanging genes or interbreeding. — Dictionary.com

Va-ri-e-ty BOTANY: varieties are usually the result of selective breeding and diverge from the parent species or sub species in relatively minor way. — biologyonline.org/dictionary



C. What Darwin observed was micro adaptation NOT _____ evolution.
i.e. "Irreducible Complexity" (Michael Behe)

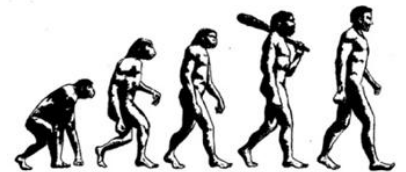
IV. DO VARIATIONS AND MUTATIONS _____ EVOLUTION?

A. God created everything according to their "_____."

Genesis 1:24 (NIV84) And God said, "Let the land produce living creatures according to their kinds."

B. Mutations rarely, if ever, create anything _____.

V. WHAT ABOUT _____ APE MEN?



A. We have been told humans evolved from _____.

B. "Missing Link" still _____!

C. Startling lack of _____ for human evolution.

D. Could it be we've been _____ to?

"The remarkable fact is that all the physical evidence we have found for human evolution can still be placed, with room to spare, inside a single coffin." — Science Digest, 90 May 1982, p. 44

VI. CONCLUSION...

A. Can your philosophy answer these _____ questions?

B. Could it be that God is _____?

Genesis 1:27 NIV84) "So God created man in his own image, in the image of God he created him; male and female he created them."